

# Card Issuance System Selection Guide



**ACCESS SECURE IDENTITY**

# HID Card Issuance Systems

## Fargo® printer/encoders with Asure ID® software produce the ID cards that make organizations worldwide more productive.

### The end of the lanyard is where the full potential of your ID cards begins.

They've gone beyond simply presenting names and faces. ID cards today, from proximity cards to multifunction technology cards, have exciting capabilities: Financial transactions. Network access control. Secure records management. Organizations of all sizes are tapping the power of these card-based applications to help them streamline operations, improve efficiency and enhance security.

### More capable cards require a more capable system.

Card-based applications require higher-level ID cards — cards that are more capable, durable and secure. The types of cards that HID Card Issuance Systems are designed to produce.



### Want durable, great-looking technology cards for your campus card program?

Build your system around Fargo High Definition Card Printer/Encoders.

### Want secure, on-the-spot issuance of customer cards anywhere in the country?

HID Asure ID® software will make it happen.

### Need to protect your cards from counterfeiting or tampering?

Fargo Visual Security Solutions™ are the ultimate deterrent.

HID Card Issuance Systems bring all of these elements together to produce exactly the ID cards your card-based applications require.

### Start with expert guidance.

With so many possible configurations, be sure to ask an Authorized Integrator which Fargo printer/encoder and Asure ID software solution is right for you. With more than 140,000 installations around the world, they're the experts on building card identity systems that help make your organization more productive — whether you issue multifunction technology cards or basic photo IDs.

The Laminex Family of Companies



Since 1945



Since 1981



Since 1985



Since 1997

Toll Free: (800) 438-8850  
Worldwide: (704) 679-4170

**Make your ID cards reflect the people who wear them:  
smart, hard-working, dependable and completely authentic.**



### **HDP5000**

*Produces cards in High Definition for FIPS 201 and other government and corporate applications, delivering a new level of ID card production.*

- Prints on the reverse side of HDP® Film that is then fused to the card, for outstanding print quality over embedded electronics and greater durability and security.
- On the U.S. General Services Administration (GSA) list for FIPS 201 Approved Products.
- Exceptionally reliable – because printheads never touch the card during the HDP process, they're protected from damage.
- Versatile modular design changes with your needs; easily upgrade to dual-sided printing, single- or dual-sided lamination and card encoding technologies.
- Affordably priced.

**The Laminex Family of Companies**



Since 1945



Since 1981



Since 1985



Since 1997

**Toll Free: (800) 438-8850  
Worldwide: (704) 679-4170**

The industry choice for outstanding performance, versatility and security, Fargo card printer/encoders are easy to use for a wide range of identification applications. With options such as encoding modules and laminators, these units can be configured to produce cards for a wide range of applications, from basic photo IDs to biometric technology cards.



### **DTC550**

*The Direct-to-Card workhorse for diverse applications.*

- Can encode up to three different smart card technologies, plus magnetic stripe, in the same pass as card printing and lamination.
- Integrates with your existing infrastructure.
- Allows for centralized or distributed issuance.
- Perfect for high-volume card printing and encoding.



### **DTC400e**

*The easy, flexible way to print and encode ID cards.*

- Dual- or single-sided Direct-to-Card printing of photos, bar codes and digital signatures.
- Exclusive SmartLoad™ Ribbon Cartridge.
- Optional modules encode data for contact and contactless smart cards plus proximity and magnetic stripe cards for access control and other applications.
- Rewritable card capabilities eliminate the waste of short-lived cards with the ability to erase and rewrite cards multiple times.
- Prints on thin, flexible or conventional-thickness cards.



### **Persona® C30e**

*Simple ID card printing from start to finish.*

- Delivers sharp, colorful, durable plastic ID cards.
- Reliable and low-maintenance with simple set-up, loading and operation.
- Prints on thin, flexible or conventional thickness technology cards.
- Upgradeable with several card encoding modules.
- Also available in monochrome only (M30e).

The Laminex Family of Companies



Since 1945



Since 1981



Since 1985



Since 1997

**Toll Free: (800) 438-8850**  
**Worldwide: (704) 679-4170**

# Asure ID Card Personalization Software

## Powerful, easy-to-use ID card personalization software for card design, data management and card production, plus developer tools.

### Asure ID® 2009 Card Personalization Software

Trusted worldwide by organizations of all sizes, Asure ID offers ID card application control software solutions that are easy to learn, feature-rich and capable of enabling today's ID card applications.



#### Asure ID Exchange™

- Designed for the most sophisticated secure credential applications, where multiple users on the network need to create, update and maintain multiple shared records in real-time.
- Advanced smart card functionality is supported by the iDIRECTOR™ encoding and management module.
- Enhanced database connectivity with the capability to Live Link™ with multiple external databases for real time data exchange and through support of multiple database types.
- Configurable Data Entry Center provides quick, no-nonsense card production along with batch and sheet printing capabilities.



#### Asure ID Enterprise™

- Networkable card personalization software allows multiple workstations to share a common database.
- Database connectivity is enhanced with the support of a variety of database types, as well as the ability to Live Link™ with external databases for real time data exchange.
- Features include advanced, yet intuitive, card design processes, a configurable Data Entry Center for quick, no-nonsense card production and batch and sheet printing capabilities.

Asure ID® 2009 makes it easier to design and manage ID cards than ever before. Featuring a highly intuitive user interface based on the Microsoft® Ribbon, Asure ID 2009 puts everything you need to create a card within just a few mouse clicks. Plus, the software is built on the Microsoft .NET technology platform for stability and interoperability.



### **Asure ID Express™**

- Popular card personalization software for stand-alone systems with advanced, yet intuitive, card design processes.
- Provides basic external database connectivity with real-time data exchange.
- Features include a configurable Data Entry Center, batch and sheet printing custom reports and password access control.



### **Asure ID Solo™**

- Entry level card personalization software that provides simplified processes for card design
- A configurable Data Entry Center enables quick, no-nonsense card production.
- Features include basic database functionality to save records along with dual-sided printing capabilities.

# Secure Materials

## One look tells counterfeiters that they're defeated before they even try.

### Holographic HDP Film

High Secure holograms on HDP Film — the ultimate in visual security. Only for Fargo HDP printer/encoders.



### Custom High Secure HDP Film

Your unique holographic image, plus Visual Security Elements (VSEs) such as morphing images and micro text, all integrated within HDP Film. Extremely difficult to forge, yet easy to authenticate.



### Standard High Secure HDP Film

Fargo's standard Orbit Globe hologram featuring multiple VSEs imaged onto HDP Film. Like the custom film, any attempt to peel apart the layers destroys the image for a tamper-evident solution.

### Flourescing Ribbons

An economical way to add an incremental level of security to your photo identification cards. Only for Fargo HDP5000 printer/encoders.



### YMCFK Ribbon

In addition to yellow (Y), magenta (M), cyan (C), and resin black (K) panels, this ribbon contain a dye-based fluorescing panel (F) which prints a static or a dynamic one-to-one personalized grayscale fluorescing image. The fluorescing image is completely invisible until exposed to ultraviolet light.

The Laminex Family of Companies



Since 1945



Since 1981



Since 1985



Since 1997

Toll Free: (800) 438-8850  
Worldwide: (704) 679-4170

# Secure Materials

## Holographic Overlamines

Choose from Secure or High Secure holographic lamination. Only for Fargo HDP or Direct-to-Card lamination modules.



### Custom High Secure Overlamine

Your custom holographic design integrated with a combination of VSEs produces a hard-to-duplicate ID card. Also available in a standard design.



### Standard High Secure Overlamine

Our standard Orbit Globe hologram featuring multiple VSEs. An off-the-shelf solution where incremental security is important.



### Custom Secure Overlamine

A cost-effective solution that uses simple, 2D movement of your graphic or text to create a holographic design.



### Custom Secure Express™ Overlamine

The fast track to basic, yet customized holographic protection. Fast delivery. Low minimum order requirements. Supports basic designs and text.

The Laminex Family of Companies



Since 1945



Since 1981



Since 1985



Since 1997

**Toll Free: (800) 438-8850**  
**Worldwide: (704) 679-4170**

# Secure Materials

## Holographic Foil Cards

Fargo Holographic Foil Cards provide a high level of protection by making their visual security elements part of the card itself. Holographic foil elements are either embedded on the card surface, or just below the surface, beyond the reach of counterfeiters.



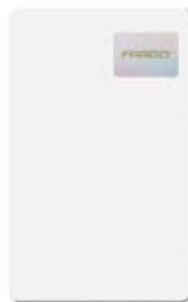
### Custom HoloMark™ Card

Your custom 3D image in a high-resolution hologram that's permanently embedded onto the card surface. Virtually impossible to duplicate, yet easy to validate. Also available in a standard design.



### Custom Translucent Foil Card

A secure hologram of your custom design in a translucent 2D foil embedded just below the card surface for maximum security and durability.



### Custom VeriMark™ Card

Your custom 2D graphic hot stamped in gold onto a silver metallic foil. Visual security with minimum cost and delivery time.



### Custom Metallized Foil Card

Your custom design in a metallized hologram that's layered just below the card surface for maximum durability and resistance to counterfeiting or tampering.

The Laminex Family of Companies



Since 1945



Since 1981



Since 1985



Since 1997

**Toll Free: (800) 438-8850**  
**Worldwide: (704) 679-4170**

# Secure Materials

## Card Stock

Whether you need to print cards for traditional identification or have more advanced uses such as access control, cashless vending or secure logon, HID offers a card that will meet the needs of your specific application.



### Standard Cards

Video-grade PVC Fargo UltraCard™, PVC/PET or PVC/Polyester composite blank white card stock with polished, scratch- and debris-reduced surfaces optimizes the quality of your printed images for High Definition\* and Direct-to-Card Printing.



### iCLASS® & MIFARE®/ DESFire®

13.56 MHz read/write contactless smart card technology in various combinations with magnetic stripe and contact smart module.



### HID & Indala® Prox

These 125 kHz cards work with existing HID and Indala proximity readers. Add new applications to your proximity card with a contact smart module.



### Multi-technology Cards

Seamlessly upgrade from existing magnetic stripe, proximity and/or Wiegand readers and cards to a contactless smart card system. Implement multiple applications requiring diverse technologies with a single credential.

\*When customizing cards using Re-Transfer Printers that fuse images to the surface of the card by applying heat and pressure (such as the Fargo HDP5000), we recommend the use of composite cards, which are better able to withstand the higher application temperatures.

The Laminex Family of Companies



Since 1945



Since 1981



Since 1985



Since 1997

Toll Free: (800) 438-8850  
Worldwide: (704) 679-4170

# Accessories

## Everything you need to create a complete ID card solution.



### **ID Accessories**

*ID accessories give you choices for convenience, security and durability, plus premium quality and reliable service.*

High-quality ID accessories help you create the right presentation for your secure credentials. Combining a lanyard with a badge holder, for example, protects your ID card while providing quick access. Our ID accessories provide choices for convenience, security and durability. And, as with all of our products, you'll get premium quality and reliable customer service.

### **Camera Accessories**

*Customize and complete your card identity system with digital cameras, photography backdrops and other accessories.*

Our entire selection of cameras and accessories provides a simple, turnkey way to complete your Card Identity System. Digital cameras are an essential part of any photo ID system and our USB-connected cameras deliver the sharp, clear images that today's high-quality photo ID cards require. Our backdrops are easy to set up and enhance the appearance of your ID photos.

The Laminex Family of Companies



Since 1945



Since 1981



Since 1985



Since 1997

**Toll Free: (800) 438-8850**  
**Worldwide: (704) 679-4170**